



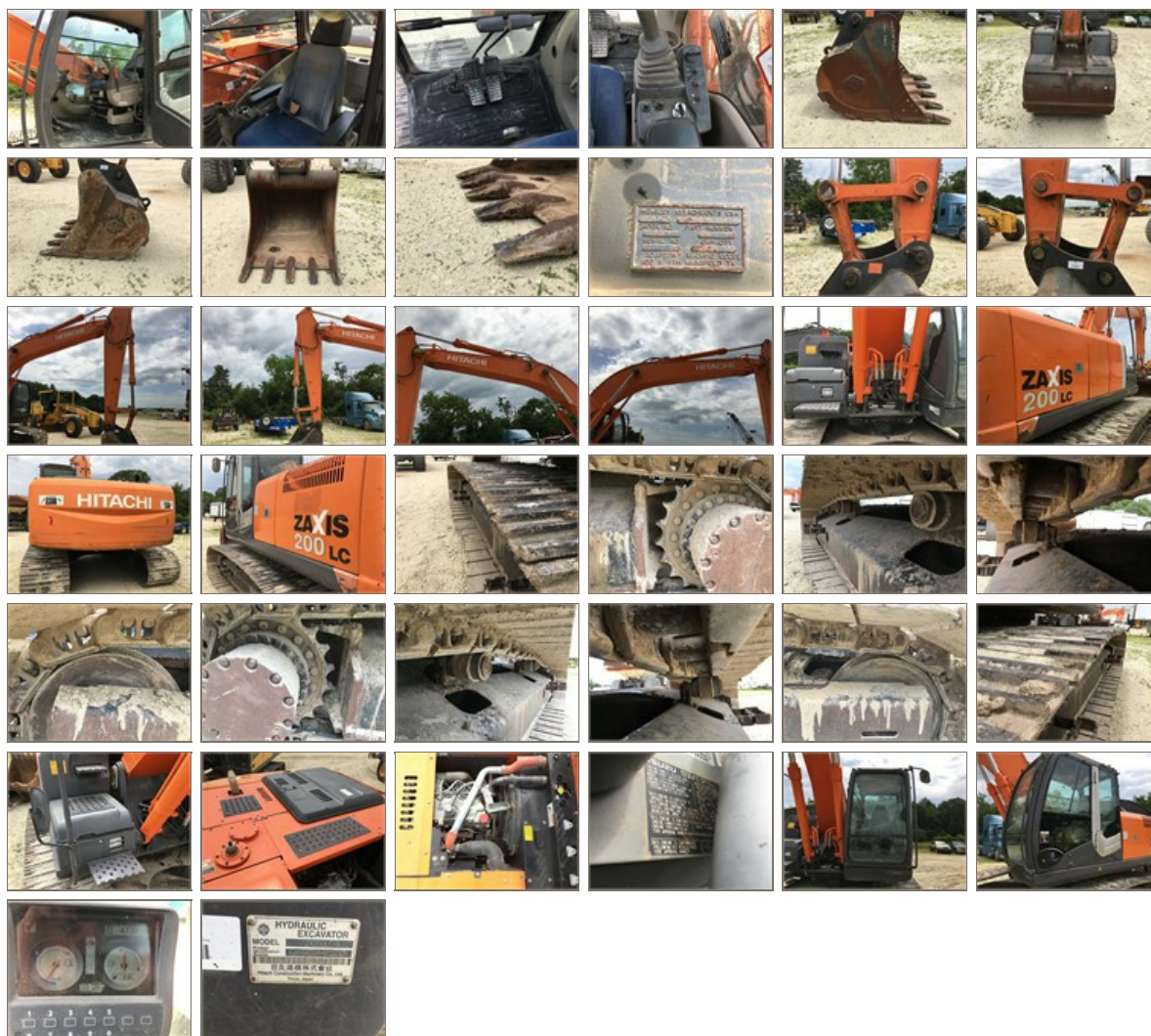
2011 HITACHI ZX200 LC-5

| Year | Serial Number | Stock Number |
|------|-------------------|--------------|
| 2011 | 1FFAST0XVA0320743 | CE0743 |

| Hours | Location |
|-------|---|
| 4739 | Equify TM - Mike Culverhouse 777 Main St. Fort Worth, Texas USA 76102 |



| Category Specifics | | |
|--------------------|-------------|-----------------|
| Stick Size | 115" | |
| Stick Condition | Good | Normal Wear |
| Swing Bearing | Good | |
| Boom Condition | Excellent | |
| Bucket Size | 48" | |
| Bucket Type | Dirt/ Tooth | |
| Bucket Condition | Excellent | |
| Counterweight | Good | Minor Scratches |
| Pins/Bushings | Good | |
| Emergency Shut Off | Excellent | |



General Appearance

| | | |
|---------------------|-----------|------------------------------|
| Guards/Covers/Steps | Good | Minimal Scratches |
| Hood/Grill/Fenders | Excellent | |
| Glass/Mirrors | Excellent | |
| Doors | Excellent | |
| Cab Condition | Excellent | |
| Cab Type | Closed | |
| Paint | Good | Minor Scratches/ Normal Wear |
| Seat | Fair | Tear in Back Rest |
| Heater | Yes | |

General Appearance Interior

| | |
|---------------|-----------|
| A/C | Yes |
| A/C Condition | Excellent |

| Engine | | |
|----------------------|------------|---------------------------|
| Engine Manufacturer | Isuzu | |
| Engine Model | A14HK1X | |
| Engine Serial Number | 4HK1469772 | |
| Horse Power | 172 | |
| Blow-By | No | |
| Oil Leaks? | No | |
| Smokes | No | |
| Turbocharger | Yes | |
| Coolant Leaks | Yes | Cracked Coolant Reservoir |
| Coolant Levels | Low | |

| Powertrain | | |
|------------------------|-------------|-------------|
| Transmission Type | Hydrostatic | |
| Forward Speed | Hi/Low | |
| Reverse Speed | Hi/Low | |
| Transmission Condition | Good | Operational |
| Torque Converter | Good | |
| Linkage | Good | |
| Final Drives | Good | |

| Chassis | | |
|----------|---------------|--|
| Pad Type | Triple/ Steel | |
| Pad Size | 31.5" | |

| Electrical | | |
|---------------------|------|-------------------------------------|
| Batteries | Good | |
| Warning Lights Work | Yes | |
| Gauges Work | Yes | |
| Lights Work | Yes | Right Front Headlight Inoperational |

| Hydraulics | | |
|-----------------|-----------|-------------|
| Hoses | Excellent | |
| Cylinder Rods | Excellent | |
| Pumps | Excellent | Operational |
| Hydraulics Leak | No | |